

JOIN NOW!!!



Clay Water Plant



Water Storage



Osgood Water Plant

ABOUT: Iowa Lakes REGIONAL WATER

Founded in 1977 through collaboration from local farmers, ILRW is a member-owned, government regional utility organization with our main office located in Spencer, Iowa.

THE Numbers :

- **5,500** Current members
- **28,950+** people served
- **40%** Livestock & Confinement
- **12** Counties
- **29** Community systems
- **2,000+** Miles of rural distribution pipeline (That's the U.S.A. West Coast to East Coast!)
- **7** Water storage facilities
- **1** Softening water treatment plant
- **1** Reverse osmosis water treatment plant
- **12** Booster stations
- **30** Employees

Mission :



Serve as a regional utility providing safe, reliable, and economical water and wastewater services to Northwest Iowa and Southwest Minnesota.

Vision :

Strive for excellence in the products and services delivered to our current and future customers while enhancing the quality of life through innovation,

Quality Water SIGN-UP OPPORTUNITY



Iowa Lakes
REGIONAL WATER

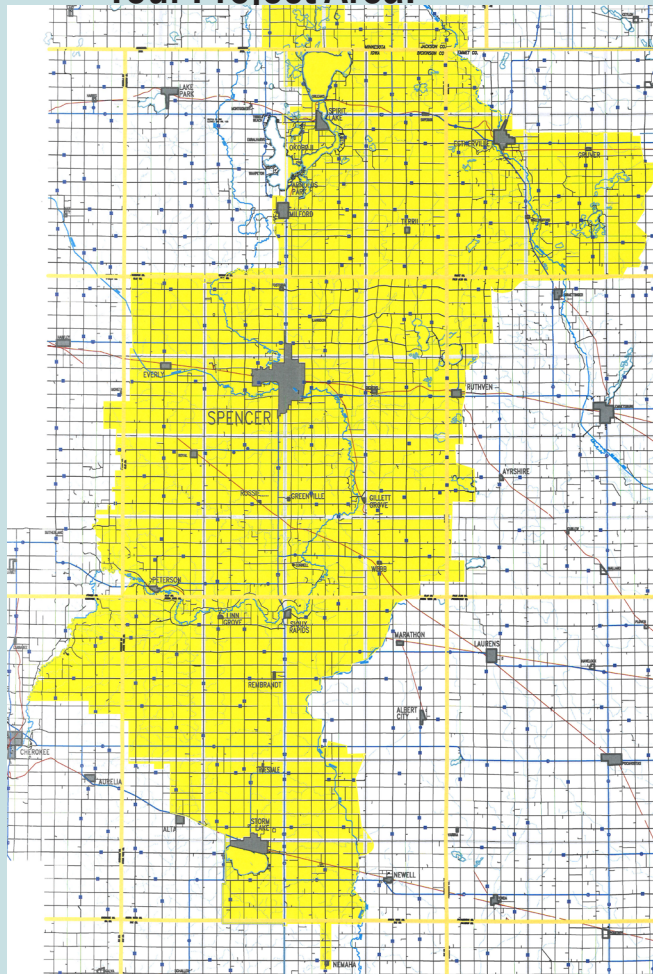
Northwest Iowa Residents & Businesses

Serving You...

Clean water is vital to our health, community and economy. Let our experts ensure your family has only the best water every day. Our staff is dedicated to serving you and your family with high quality, safe, reliable, great tasting water along with providing you exceptional service you will appreciate. Each day we perform water quality testing and maintain 6 to 8 grains of hardness, saving you in-home treatment expenses. Also, consider rural water to avoid the increasing Northwest Iowa drought challenges!

Your Project Area:

North



ILRW Water... Simple Figures... That's All!

Activation Fee: \$150

Installation Fee: \$1,500 (Service) **or \$4,500** (Mainline + Service) Majority of Cost Paid by Federal Funding
Monthly Minimum: \$54.59 (**\$650 Downpayment of Installation Fee will start process**)

Commodity Charge: Based on a per 1,000 gallon rate structure

Water Service Line Protection Plan: \$4.90 per month (Leak Coverage - 96% participation rate)

Monthly Average Examples:

Family uses 3,000 gallons per month = \$72.14 (without WSLPP)

Family Farm uses 10,000 gallons per month = \$147.14 (without WSLPP)

Excludes 6% water excise tax

NOW ACCEPTING SIGN-UPS.... IT'S EASY!

**Go to www.ilrw.org
for more information!**

WATER IS Essential :

- Provides nourishment
- Rids body of toxins
- Improves & maintains sanitation
- Wildlife & plant survival
- Prevents diseases
- Agriculture & food production
- Protects public health & hygiene
- Protects the environment

FROM OUR FACILITY... To Your Home



Bette Brand, Deputy Under Sec. RD



Osgood Plant



Groundbreaking Ceremony



Mainline Crew



Serviceline Crew

We Are Here For You!

ILRW applies for federal loans and grants to finance expansion projects that will bring you and your neighbor's rural water. In 2020, Iowa Lakes Regional Water received funding to continue providing services to future customers in our current service area. The notice to proceed was granted in March 2021.

Also in 2022, ILRW completed construction of a new reverse osmosis water treatment plant in Palo Alto County, Iowa. As quality drinking water is available in your area, we are seeking your interest in rural water. Typically, we are able to get water service to you within 2 years once we've secured easements, permits, regulatory requirements, obtain road crossing permits, construct the mainline pipe (if not already along your road), and finally install your water service. Fortunately for you, much infrastructure is already in operation in your service area.

We are requesting your interest by signing the enclosed sign-up form, then mailing the form along with a down payment of \$650.00 (\$150 Activation Fee + \$500 Partial Installation Fee).

Iowa Lakes Regional Water looks forward to the privilege of providing you with the quality water you deserve.

Reap the Benefits OF BEING AN ILRW MEMBER

- **SAFE** meets EPA's drinking water standards
- **EXCELLENT QUALITY** softened drinking water maintaining 6-8 grains of hardness
- **RELIABLE** licensed operators & construction crews available 24/7 (even during power outages)
- **EXPERTISE** Decades of knowledge in the drinking water field including: installation of pipeline, leak detection, maintenance, safety processes & customer service
- **ECONOMICAL** 40+ years relationship with federal, state and local regulators and funding agencies
- **LONG-TERM RELATIONSHIP** with engineering firm on an established, growing infrastructure
- **TECHNOLOGY** applications for today's preference
- **MEMBERSHIP** in organization and infrastructure
- **ENSURE SUSTAINABILITY** and promote economic growth in rural areas and communities
- **PEACE OF MIND** Safe and dependable water from your tap



FOCUS

Like telephone, fiber, natural gas and electric companies, by allowing ILRW to deliver to you excellent quality water & service, you can focus on your family and business' wants and needs.

Consumer SAVINGS

Home Consumption = Savings

Bottled Water = \$0.64 per gallon

(About 3,000% more expensive than tap water)

ILRW Water = \$0.02 per gallon

Similar Service Comparisons:

Consider what you're willing to pay

Cable-Internet Package = \$140 (\$70 average)

Cell Phone = \$200 (family of 4)

Online Streaming = \$75 (family paying for 3 services)

Electricity = \$223

Natural Gas = \$72

(Utility & Service Provider Monthly Averages)

MYTH: "Bottled water is more pure than tap water"

FACT: State & federal government regulations require far more rigorous and frequent safety testing and monitoring of municipal drinking water systems than bottled water companies. Public drinking water is the cleanest its ever been. (foodandwaterwatch.org)

In 2021, local drinking water utilities, including ILRW performed a taste study, and 68% of participants who participated preferred tap water.

FACT: Customers who have ILRW service receive a high quality water supply and a reliability of service most rural residents cannot achieve with their own wells. Young families are concerned about the health effects of poor water. Nitrates may affect unborn and newborn babies. Coliform bacteria in old wells or improperly constructed wells are also a concern. Aesthetic water quality parameters such as iron, manganese, hardness, odor and taste are also important to consider. Constituents that can be seen, tasted or smelled generate the most common complaints, though other more significant quality issues including nitrates, sulfates, lead, copper, radium, arsenic and other Safe Drinking Water Act Primary Contaminants are very real health concerns that often go undetected in individual supplies.



Iowa Lakes Regional Water
1301 38th Avenue West
PO Box 555
Spencer, IA 51301-0555

Phone: 712-262-8847

Fax: 712-262-8241

www.ilrw.org